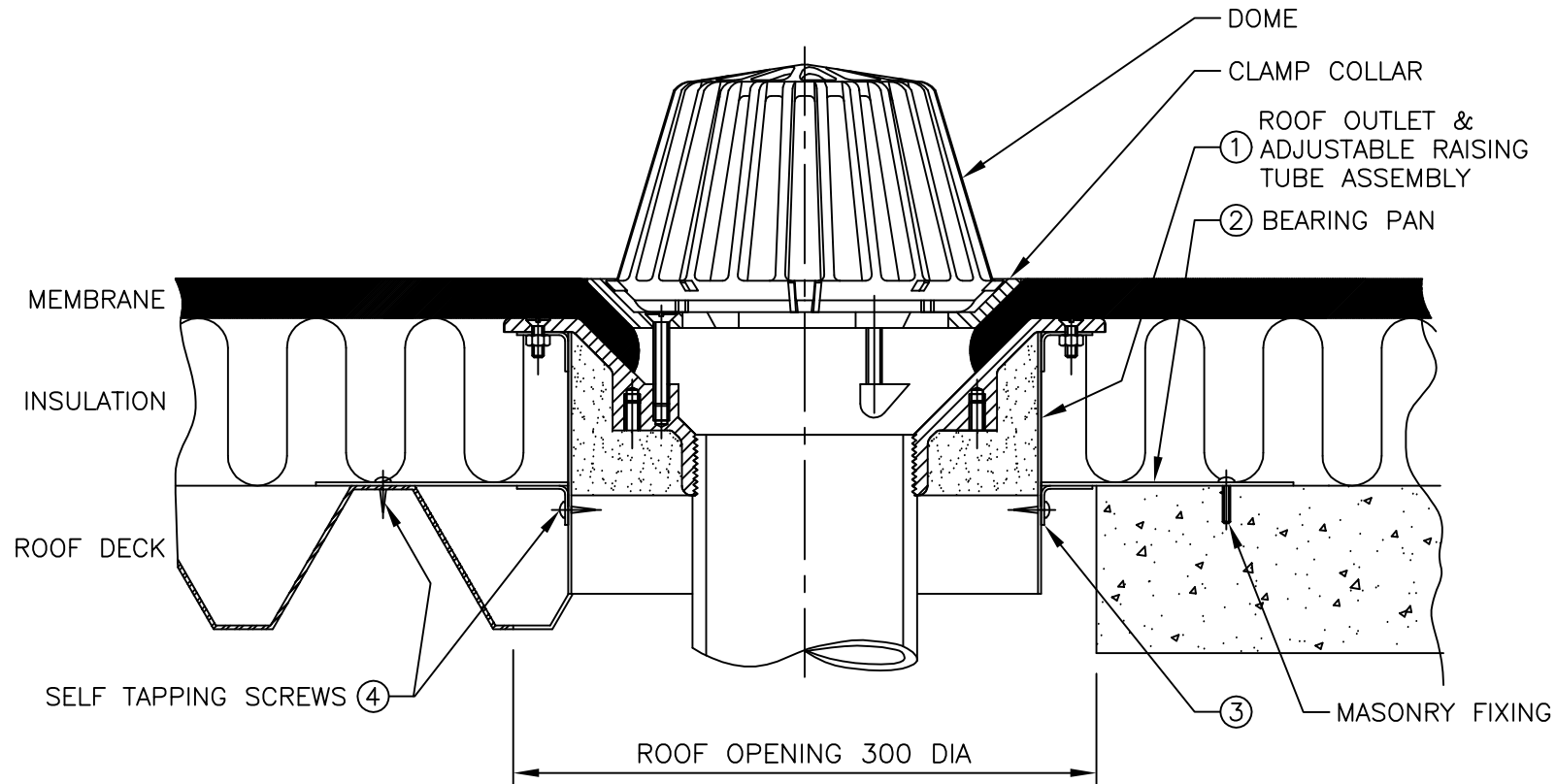


## INSTALLATION DETAILS FOR ADJUSTABLE BEARING PAN (WC4 & WC5 SERIES)



### **Installation (Metal Deck Roof)**

Locate bearing pan (2) onto outlet assembly (1) to suit insulation height.  
 Drill 3mm dia through lugs (3) and fix with screws (4) provided.  
 Place assembly into prepared roof opening. Drill six 3mm dia holes through bearing pan and roof deck where peaks occur. Fix with screws (4).

Refer to membrane manufacturer's instructions and prepare flange with suitable primer. Apply membrane, dressing over flange sufficiently into sump of body to enable it to be clamped. Position membrane clamping collar and secure to body using appropriate supplied fixings, see below.

For membranes up to 15mm thick - use M8 x 30 Countersunk head screws (Wade Pt No 50902055)

For membranes over 15mm thick - use M8 x 50 Countersunk head screws (Wade Pt No 50902059)

### **Installation (Concrete Roof)**

Locate bearing pan (2) onto outlet assembly (1) to suit insulation height.  
 Drill 3mm dia through lugs (3) and fix with screws (4) provided.  
 Place assembly into prepared roof opening. Drill six holes through bearing pan and roof deck and fix with masonry screws.

Wade International Ltd., Third Avenue, Halstead, Essex, CO9 2SX

Tel: 01787 475151 Fax: 01787 475579

e-mail: [tech@wade.eu](mailto:tech@wade.eu) Website: [www.wade.eu](http://www.wade.eu)

PART NUMBER 50908140  
 ISSUE :- 2